



Empowered lives.  
Resilient nations.



www.theGEF.org



# CLME+ Project

Caribbean & North Brazil Shelf Large Marine Ecosystems



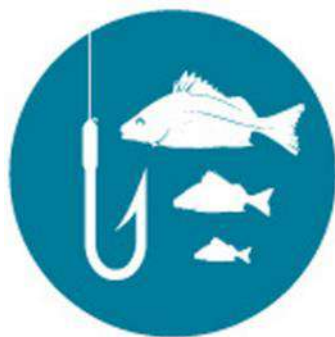
2<sup>nd</sup> Regional Consultation on a Permanent Coordination Mechanism  
and Sustainable Financing Plan for Regional Ocean Governance. Panama, 30 July – 1 August 2019

## Overview of the RGF and Coordination Mechanism Process

## MARINE POLLUTION



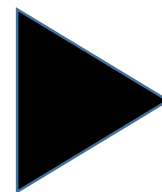
*climate variability  
and change*



## FISHERIES



## HABITATS



**SUSTAINABLE  
OCEANS-BASED  
GROWTH**



**LIVELIHOODS**



**RESILIENCE,  
DRR**



**PEACE,  
PREVENTING  
CONFLICT**





## THIS FIGURE:

- WECAFC AREA
- CARTAGENA CONVENTION AREA
- 3 LARGE MARINE ECOSYSTEMS:

CLME + NBSLME  
= CLME+

*Note: LME's = adequate geographic units for EBM (NOAA, GEF,..)*



## CLME+ is.....

REGION ♦ ACTION PROGRAMME ♦ PROJECT ♦ (incipient) PARTNERSHIP

*The CLME+ INITIATIVE aims to assist regional IGO's in the fulfilment of their mandates so that, working together, the CLME+ Vision can be materialized*

Catalyzing implementation of the  
10-year Strategic Action Programme  
for the Caribbean and North Brazil Shelf LME's





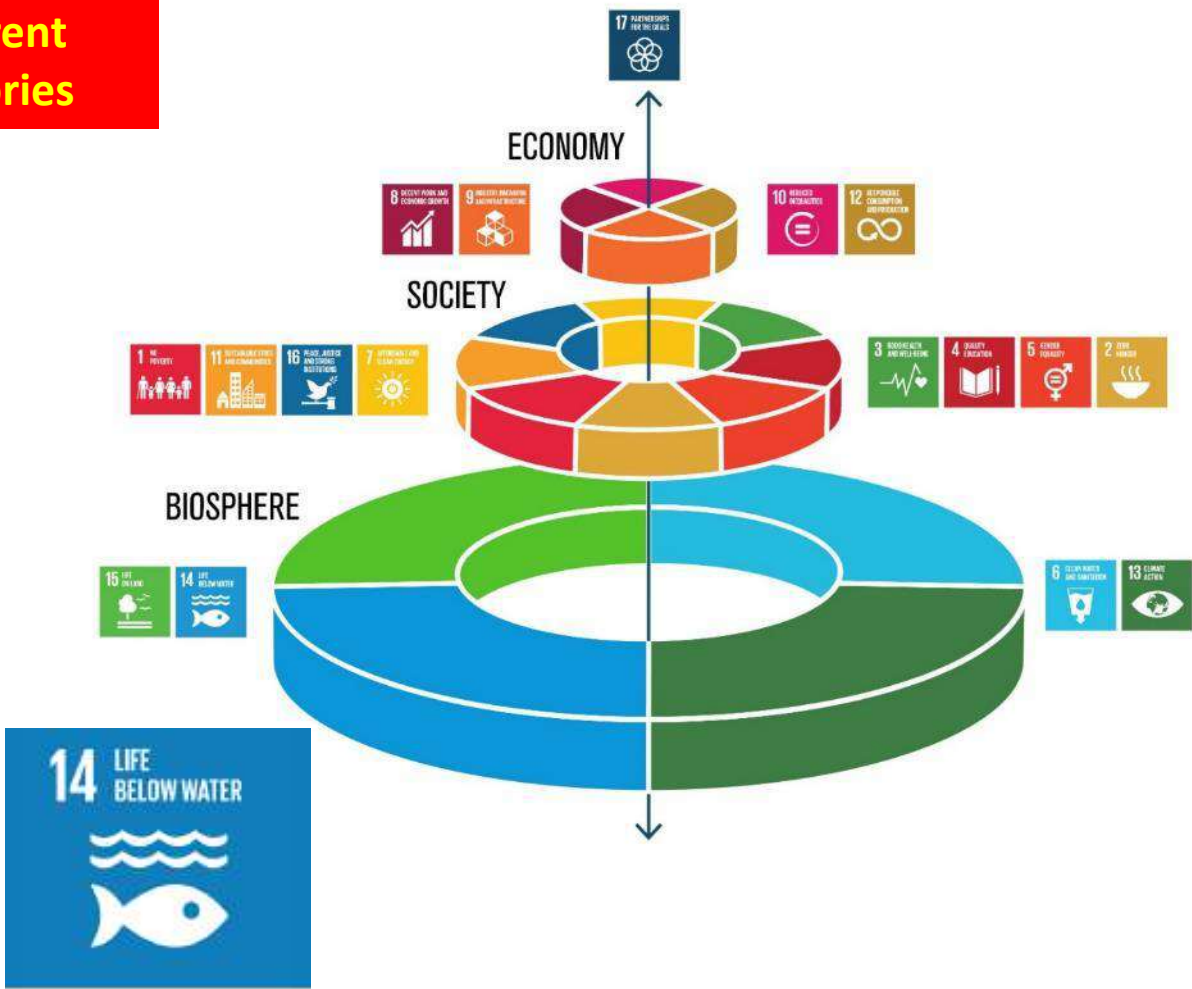
**High-level political endorsement by 36 Ministers, representing 26 different Countries and 8 Overseas Territories**

**CLME+ SAP (2015-2025)**

**VISION**

**A healthy marine environment in the CLME+ region provides benefits and livelihoods for the well-being of the people of the region**

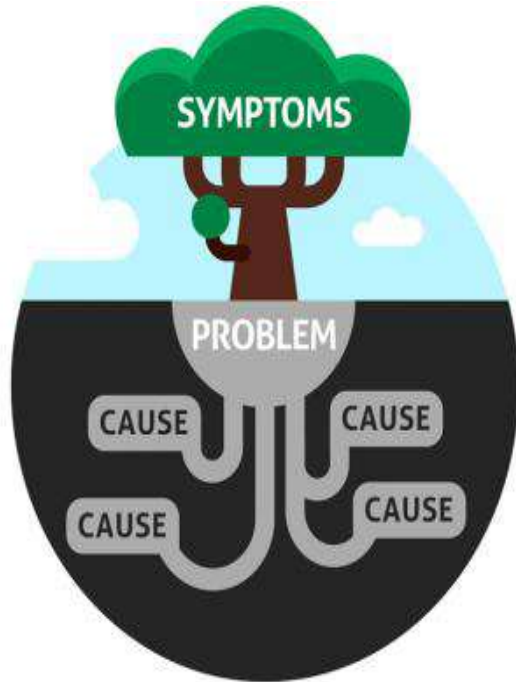
**“Contributions to human well-being, socio-economic development, food security and enhanced livelihoods from goods and services provided by the ecosystems are optimized”**



*Catalyzing implementation of the 10-year Strategic Action Programme for the Caribbean and North Brazil Shelf LME's*



# ROOT CAUSES of the 3 (+1) CLME issues



- **WEAKNESS OF GOVERNANCE** **Overarching Root Cause**
- *limited **HUMAN & FINANCIAL** resources;*
- *inadequate (ACCESS to) **DATA** and **INFORMATION/KNOWLEDGE***
- *inadequate public **AWARENESS** and **INVOLVEMENT***
- *inadequate consideration of the **VALUE** of **ECOSYSTEM** goods & services*
- ***POPULATION GROWTH** and **CULTURAL** pressures;*
- *trade and **EXTERNAL DEPENDENCY***



## Governance arrangements for marine ecosystems of the Wider Caribbean Region

ROBIN MAHON, ALEXCIA COOKE, LUCIA FANNING AND PATRICK MCCONNEY



Centre for Resource Management and  
Environmental Studies (CERMES)  
The University of the West Indies, Cave  
Hill Campus, Barbados



Sustainable Management of the Shared  
Living Marine Resources of the  
Caribbean Large Marine Ecosystem  
(CLME) and Adjacent Regions

2013

## Ocean Governance:

The principles, processes, rules and institutions that guide how we manage and use our oceans. Ocean governance goes across public and private spheres, by **involving all relevant players and many levels (local to global)**

## Interactive Governance:

the whole of interactions taken to **solve societal problems** and to **create societal opportunities**, including the formulation and application of principles guiding those interactions, and care for institutions that enable them

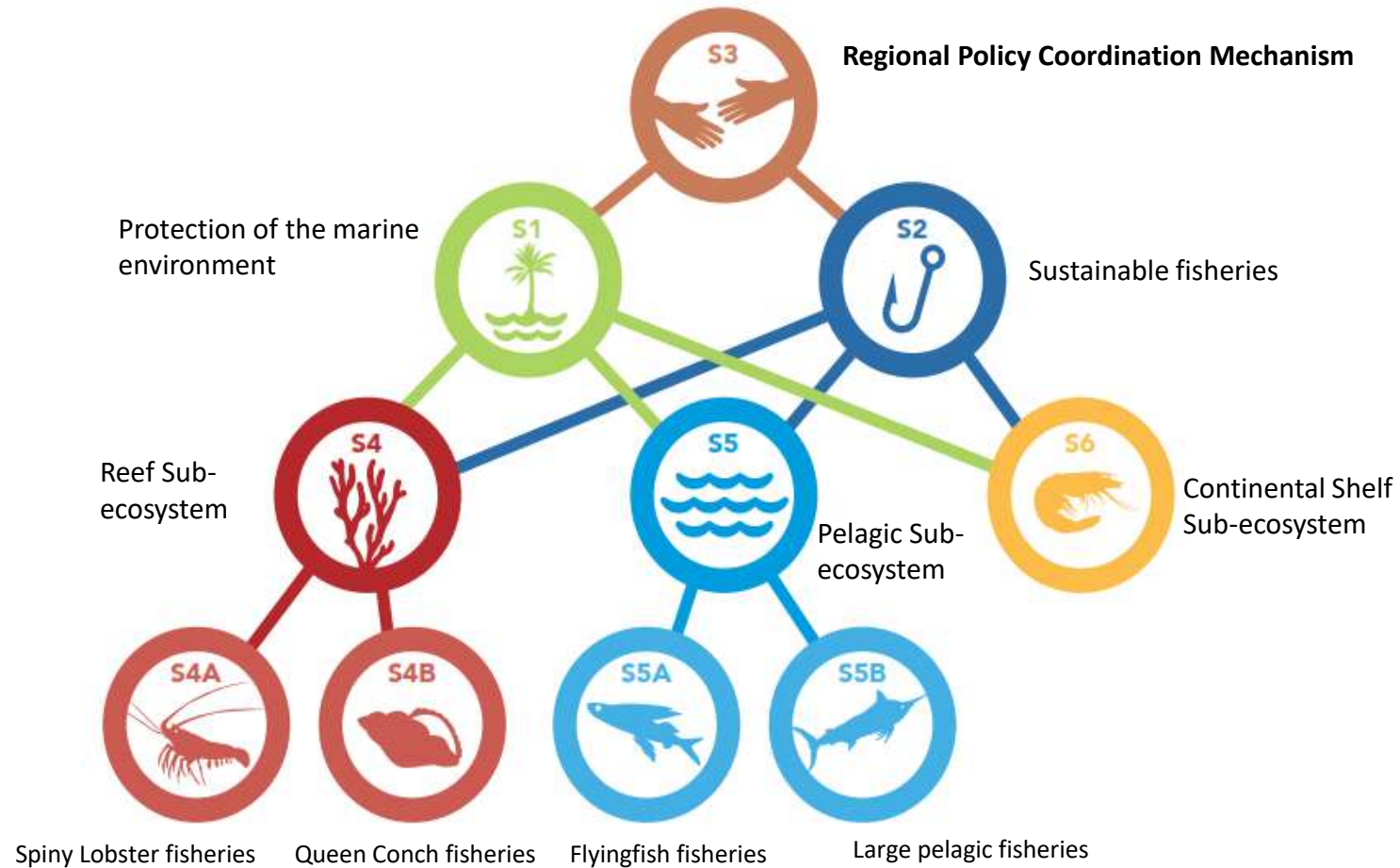
Catalyzing implementation of the  
10-year Strategic Action Programme  
for the Caribbean and North Brazil Shelf LME's



## CLME+ SAP:

76 Actions  
structured  
under 6  
Strategies

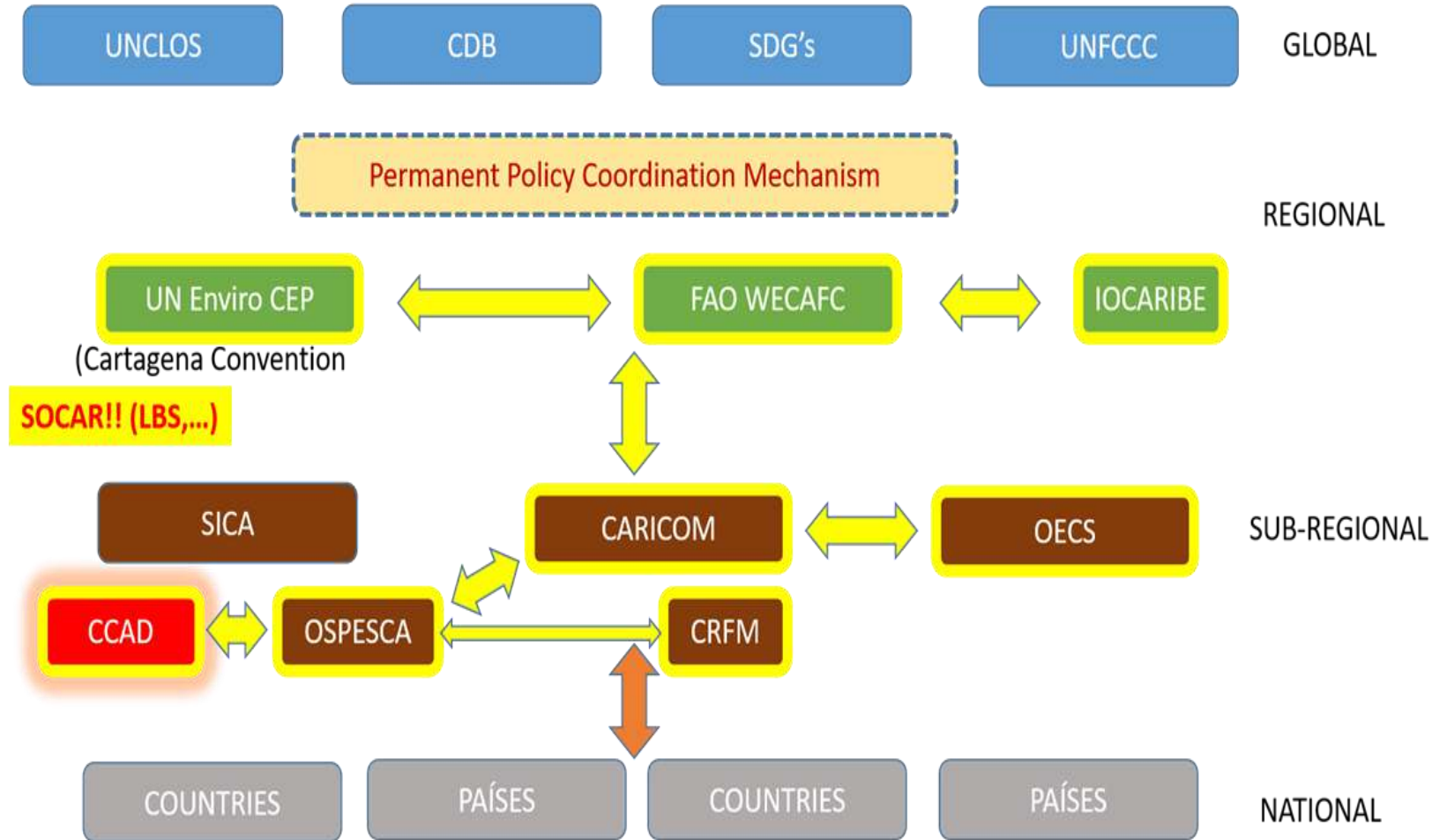
and 4 Sub-  
strategies





<b>STRATEGY 3</b> <b>Establish and operationalise a regional policy coordination mechanism for ocean governance, with initial focus on shared Living Marine Resources</b>			<b>Time Frame</b>	
			<b>Short-Term</b> (0-5 yrs)	<b>Medium-Term</b> (6-10 yrs)
<b>A C T I O N S</b>	3.1 (A)	Decide upon and establish an interim coordination mechanism amongst the regional sub-arrangements for sustainable fisheries and for the protection of the marine environment		
	3.2 (A)	Evaluate all options and propose a permanent policy coordination mechanism with a clear mandate which is financially sustainable, geographically inclusive and politically acceptable and which takes into account the principle of subsidiarity (this may include the identification of appropriate reforms)		
	3.3 (A)	Adopt and operationalise the permanent regional policy coordination mechanism for shared Living Marine Resources (sLMR) governance	adopt	
	3.4 (A)	Develop and adopt a regional policy for data and information harmonization and sharing		operationalize
	3.5 (C)	Develop and coordinate integrated and sectoral research strategies in support of the implementation of broader ocean governance in the region, with a short and medium term focus on sLMR management	develop adopt	
	3.6 (C)	Develop and coordinate integrated and sectoral sustainable financing strategies for the cost-effective implementation of broader ocean governance in the region, with a short and medium term focus on sLMR governance		adopt

## CLME+ REGIONAL GOVERNANCE FRAMEWORK



**Regional Governance Framework:**  
The entire set of ocean governance issues, the **organisations with responsibility for ocean governance**, their policy processes and **interactions among them**

Catalyzing implementation of the  
10-year Strategic Action Programme  
for the Caribbean and North Brazil Shelf LME's



## Good practice guidelines for successful National Intersectoral Coordinating Mechanisms (NICs)

S. COMPTON, P. McCONNEY, I. MONNEREAU, B. SIMMONS AND R. MAHON

CLME+ COMMUNICATION — CERMES Technical Report No. 88



Development and implementation of a Regional Governance Framework must be matched by national capacity to implement agreed actions at the national level, and to participate effectively in regional processes.

National Intersectoral Committees (NICs) that will provide the interface between the regional and national aspects of transboundary governance.



# PCM Road Map

March 2013  
CLME+ SAP  
endorsement

April 2015  
Start of CLME+ Project

September 2017  
Formalization of SAP ICM

November 2017  
Commencement of Coordination  
Mechanism Consultancy

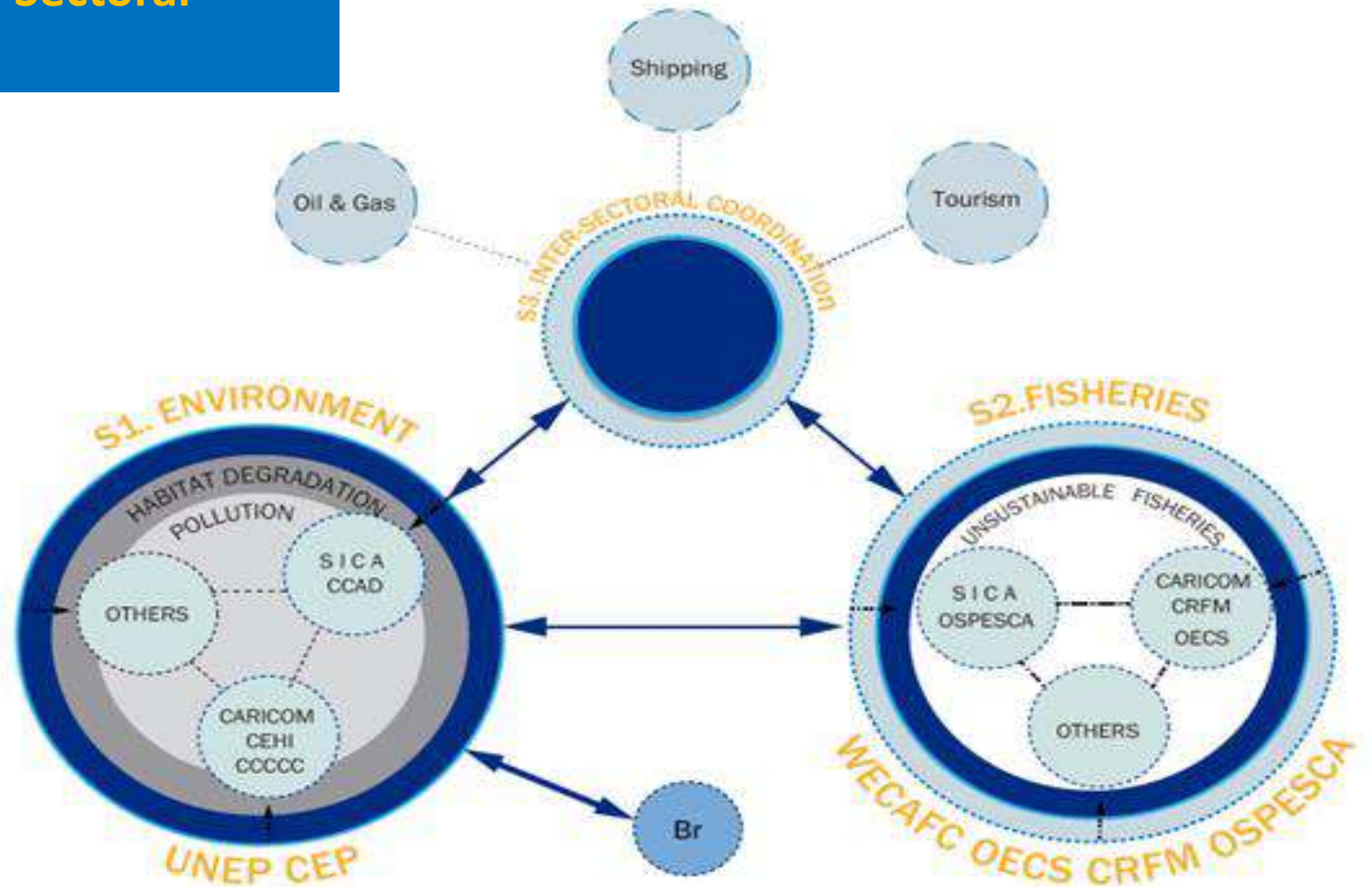
September 2018  
First Regional Consultation  
Meeting

**July 2019**  
**Second Regional**  
**Consultation Meeting**

September 2019  
First CLME+ Partnership  
Forum

March 2020  
Formal Decision on the  
Coordination Mechanism

## What the Regional Inter-Sectoral Coordination looks like



Catalyzing implementation of the  
10-year Strategic Action Programme  
for the Caribbean and North Brazil Shelf LME's



Empowered lives.  
Resilient nations.



www.theGEF.org



# CLME+ PROJECT

“Catalysing Implementation of the Strategic Action Programme for the Sustainable Management of shared Living Marine Resources in the Caribbean and North Brazil Shelf Large Marine Ecosystems”

## Component 1

Consolidating the institutional, policy and legal frameworks for sustainable and climate-resilient shared living marine resources governance in the CLME+ region



Empowered lives.  
Resilient nations.



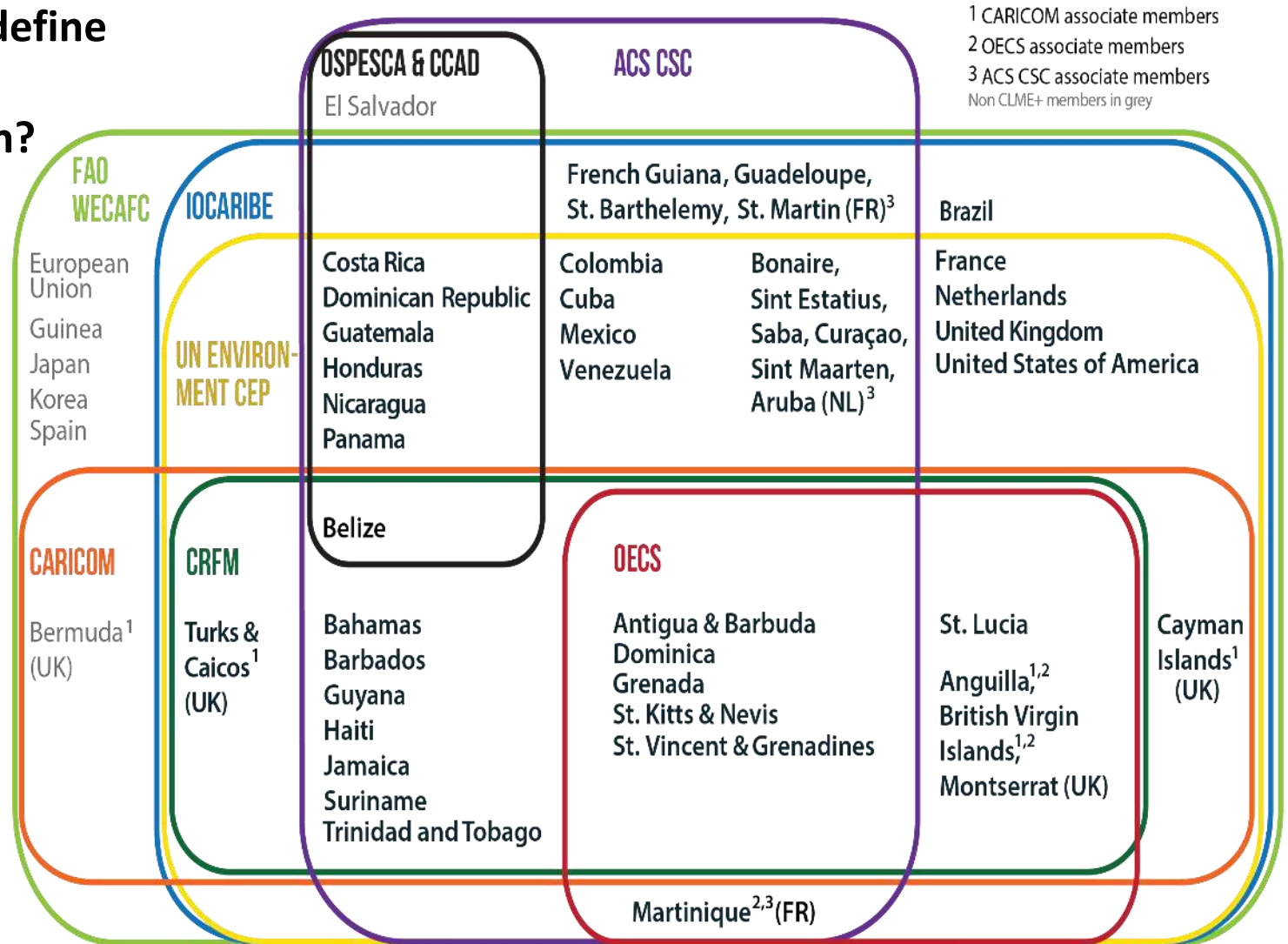
www.theGEF.org





# What Targets does the Project Document define in relation to the Permanent Coordination Mechanism and Sustainable Financing Plan?

- **Consensus** among CLME+ participating countries on a **permanent, inclusive and sustainably financed coordination mechanism** for shared living marine resources governance, by end of April 2020
- Support for the **Sustainable Financing Plan** confirmed by at least 14 countries by end of April 2020

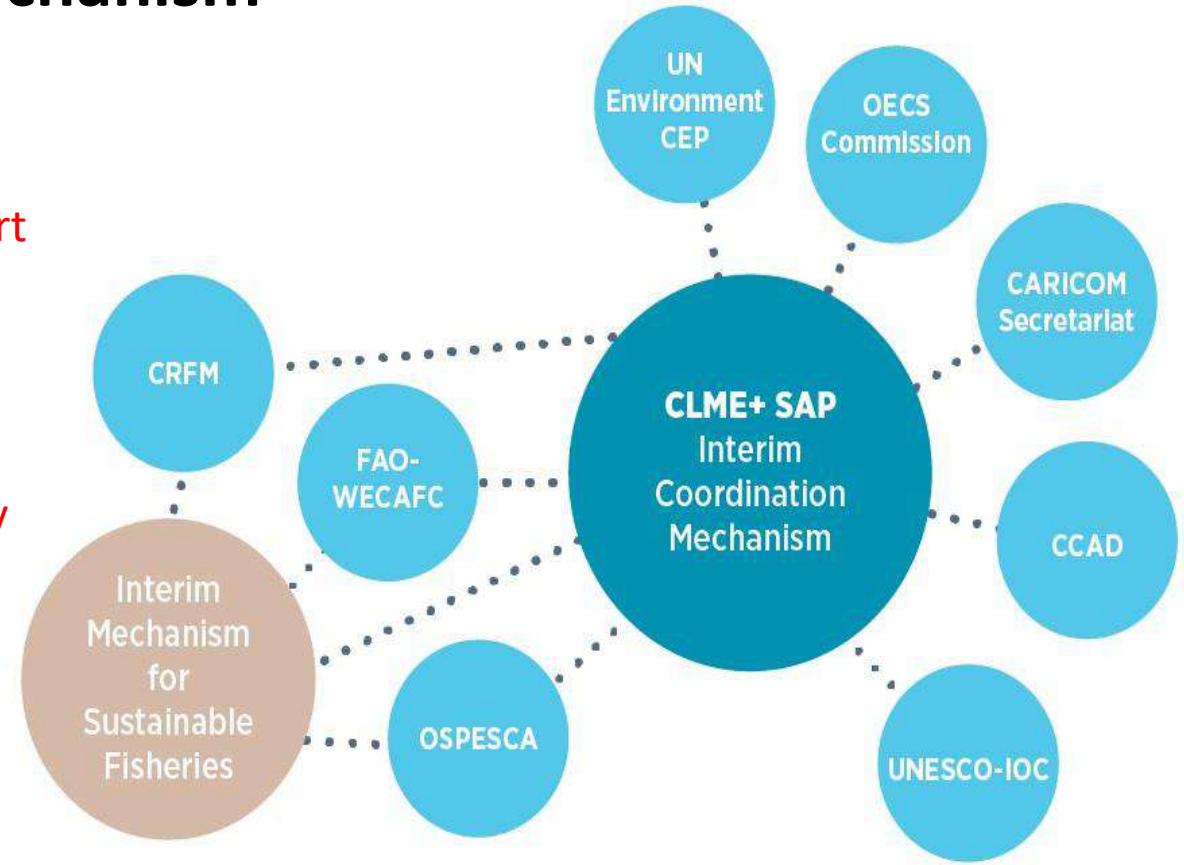


Catalyzing implementation of the  
10-year Strategic Action Programme  
for the Caribbean and North Brazil Shelf LME's



# CLME+ SAP Interim Coordination Mechanism (SAP ICM)

- ✓ Enhance regional **coordination** and **collaboration**, support **oversight** and **integration of actions** for sustainable fisheries and the **protection** and sustainable use of the **marine environment**
- ✓ Promote the up-scaling of actions by all sectors of society towards the achievement of the **long-term vision of the CLME+ SAP in support of sustainable ocean based economies.**

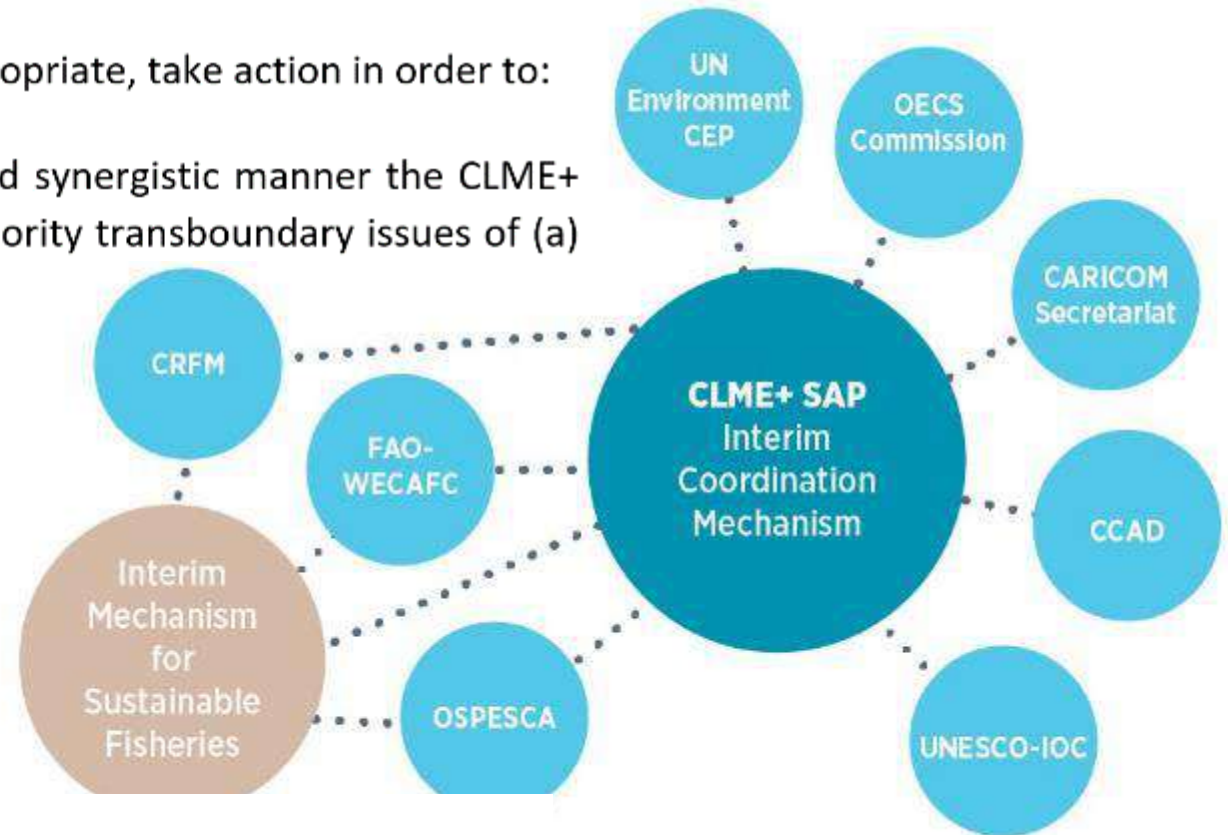


Catalyzing implementation of the  
10-year Strategic Action Programme  
for the Caribbean and North Brazil Shelf LME's

## IV. CORE FUNCTIONS OF THE ICM

The ICM will coordinate, cooperate and, where feasible and appropriate, take action in order to:

- i. Implement, monitor and evaluate in a cost-effective and synergistic manner the CLME+ SAP, with a focus on effectively addressing the three priority transboundary issues of (a)



- o Collaborative development of a “State of the Marine Ecosystems and associated Economies” (SOME) reporting mechanism, and the active promotion of its institutionalization and use as a means to bridge the science-policy gap;



# Coordination Mechanism and Sustainable Financing Plan Consultancy

In November 2017 UNOPS entered into a contract with Centre of Partnerships for Development (GlobalCAD) Barcelona to:

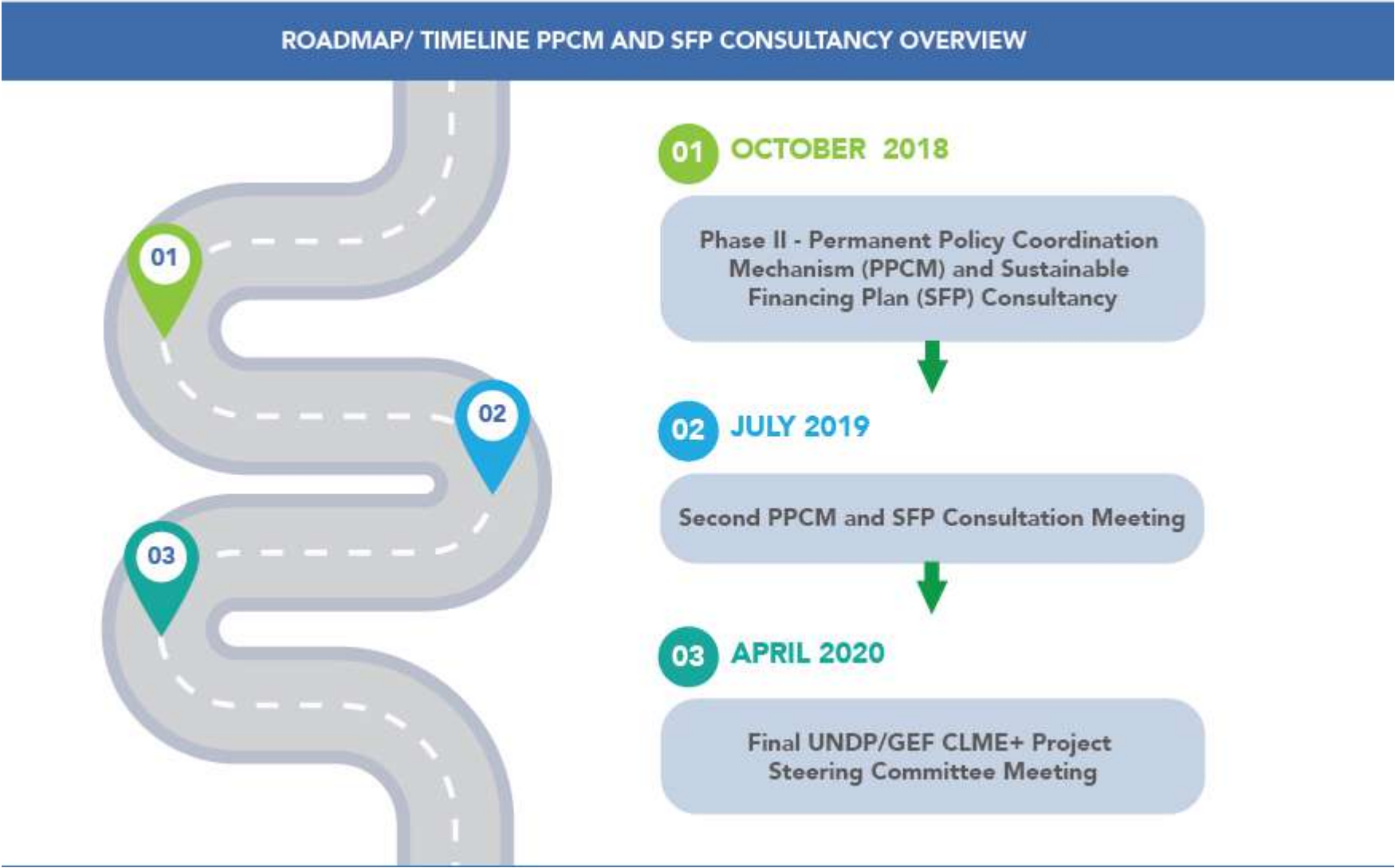
Develop options for selection adoption by CLME+ countries for:

1. A Permanent Policy Coordination Mechanism (PPCM) incl. specifications of the mandate of the mechanism and of its constituents, with an associated Sustainable Financing Plan (SFP)
1. A Sustainable Financing Plan (SFP) to support and optimise the operations of the different organisations and (inter-)organisational arrangements that make up the CLME+ Regional Governance Framework (RGF), including the PPCM

*Catalyzing implementation of the  
10-year Strategic Action Programme  
for the Caribbean and North Brazil Shelf LME's*



# A PERMANENT COORDINATION MECHANISM AND SUSTAINABLE FINANCING PLAN FOR REGIONAL OCEAN GOVERNANCE



**First Regional Consultation Meeting  
25 – 26 September, 2018  
Cartagena, Colombia**



**Countries discussed options for the Coordination Mechanism including possible mandate and functions**



# Coordination Mechanism and 2019 Intergovernmental Meetings

- Meetings where the Coordination Mechanism process was placed on the agenda for the consideration of Member States
  - CRFM Fisheries Forum and Ministerial Council Meeting
  - 15 Session of UNESCO IOC Sub Commission for the Caribbean and Adjacent Region
  - OECS 6<sup>th</sup> Council of Ministers Environmental Sustainability
  - CCAD Minister of Environment Meeting
  - 15 Meeting of the Contracting Parties to the Convention for the Protection & Development of the Marine Environment of the Wider Caribbean Region
  - OSPESCA Meeting of Vice Ministers
  - 17 Session of WECAFC



Empowered lives.  
Resilient nations.



www.theGEF.org



# CLME+ Project

Caribbean & North Brazil Shelf Large Marine Ecosystems



2<sup>nd</sup> Regional Consultation on a Permanent Coordination Mechanism  
and Sustainable Financing Plan for Regional Ocean Governance. Panama, 30 July – 1 August 2019

# GEF TDA/SAP & CLME+: continuity

**Patrick Debels**

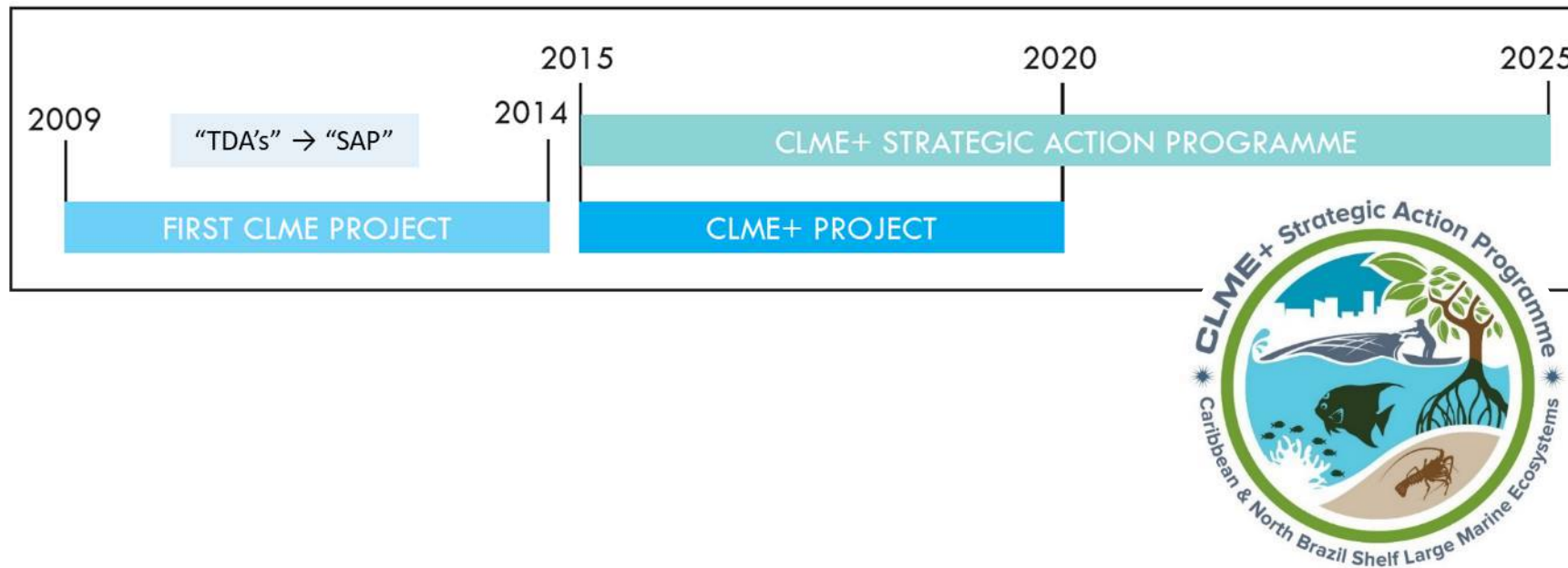
Regional Coordinator, UNDP/GEF CLME+ Project

CLME+ SAP ICM Secretariat

PatrickD@unops.org

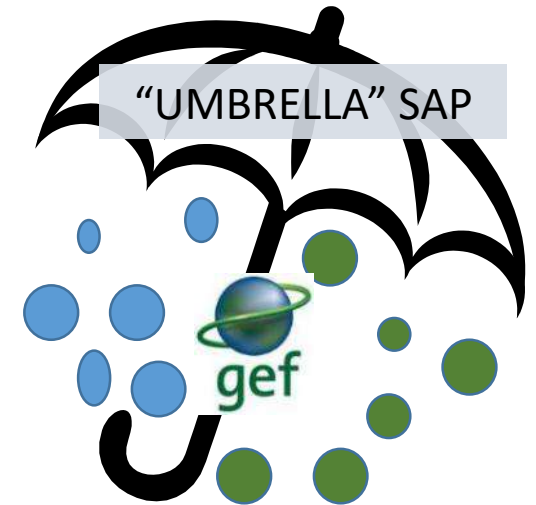
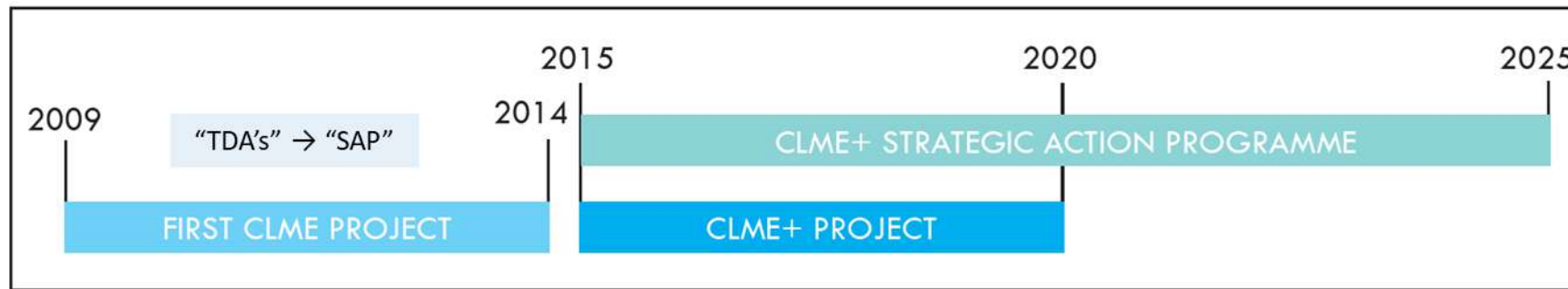


# The Critical Importance of UNDP/GEF-supported TDA-SAP approach for the Wider Caribbean Region





# The Critical Importance of UNDP/GEF-supported TDA-SAP approach for the Wider Caribbean Region

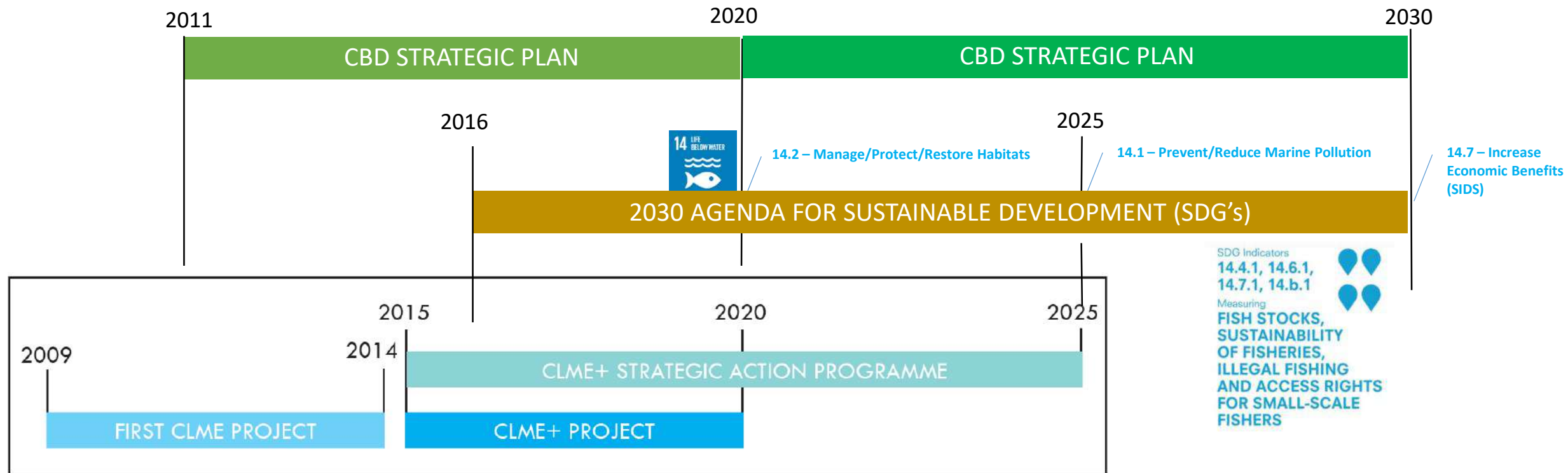


Empowered lives.  
Resilient nations.

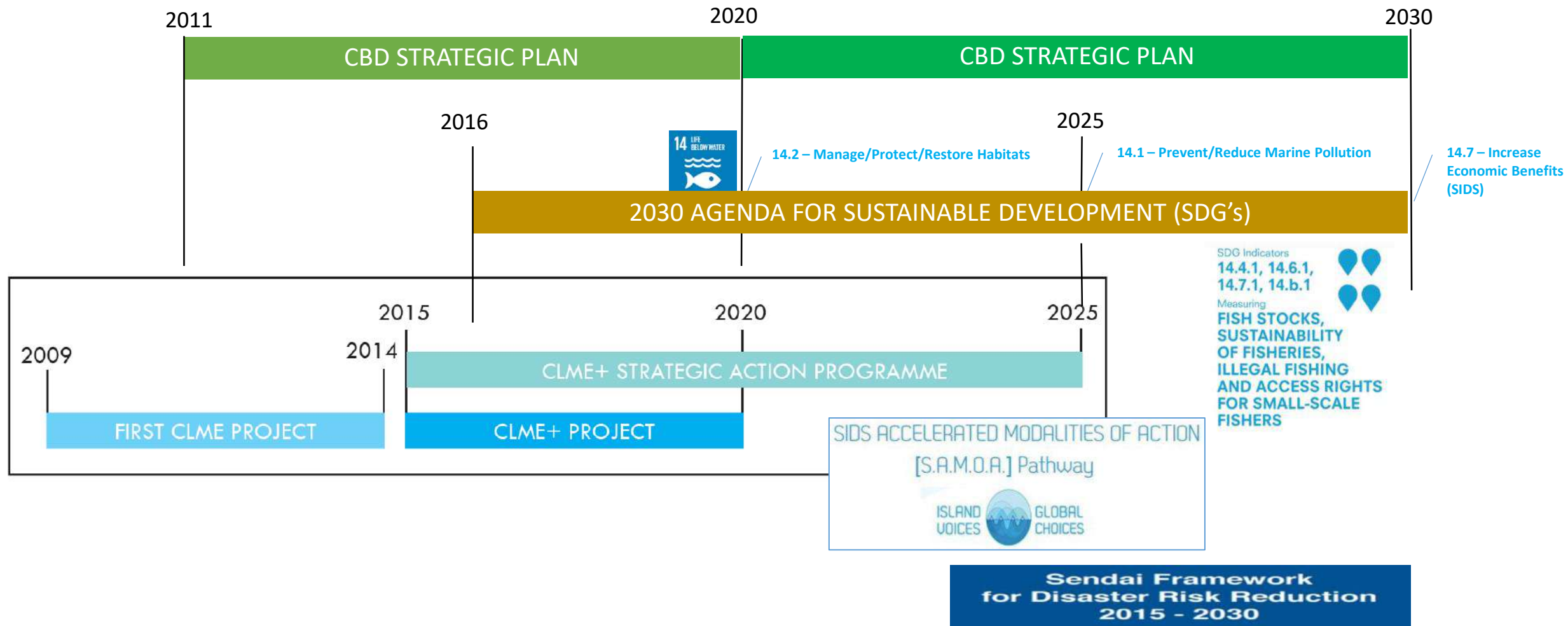


[www.theGEF.org](http://www.theGEF.org)



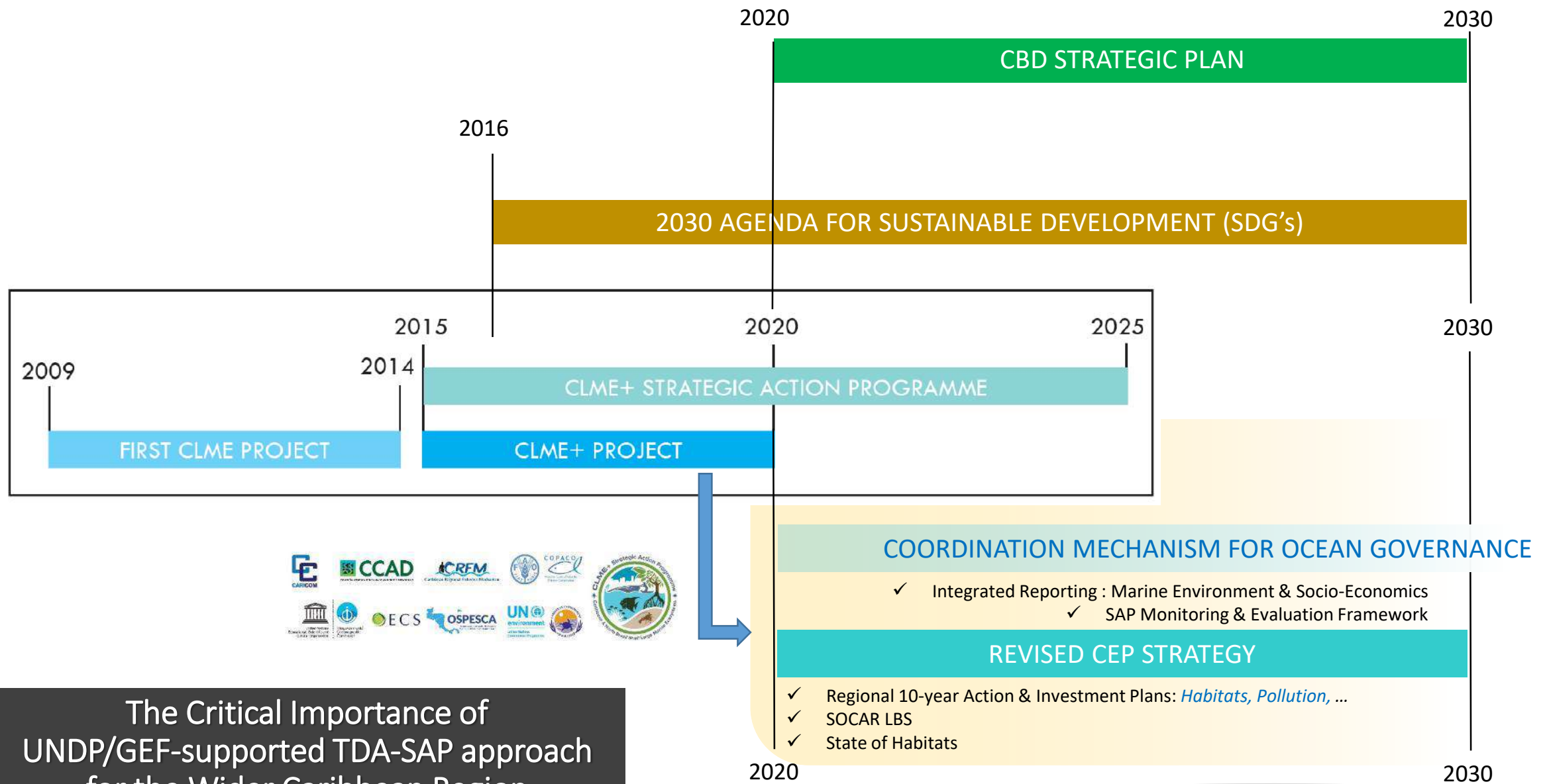


The Critical Importance of  
UNDP/GEF-supported TDA-SAP approach  
for the Wider Caribbean Region

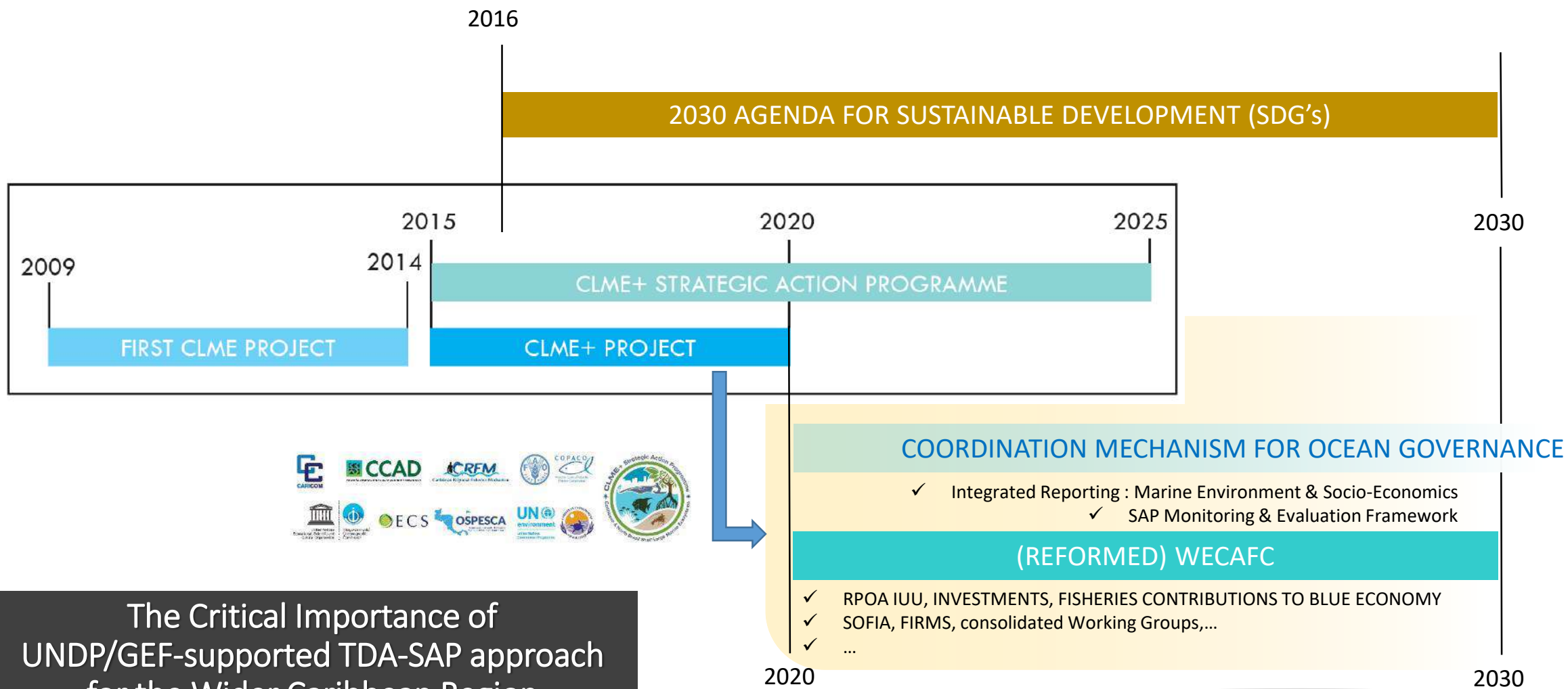


The Critical Importance of  
UNDP/GEF-supported TDA-SAP approach  
for the Wider Caribbean Region

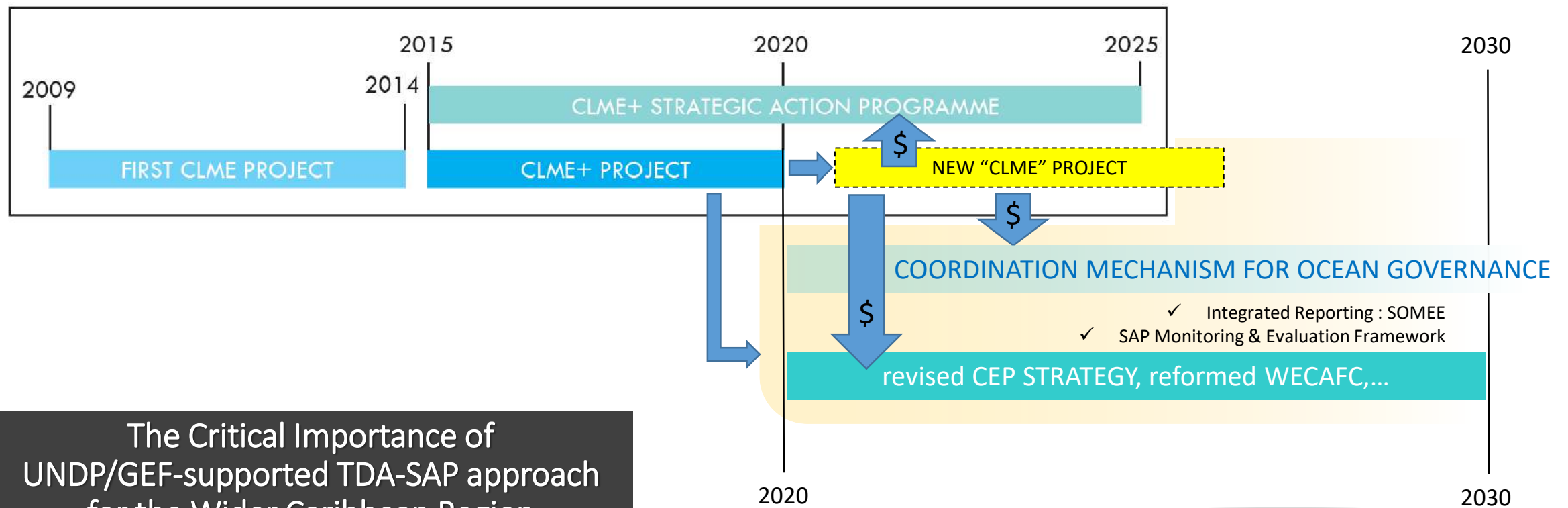




The Critical Importance of  
UNDP/GEF-supported TDA-SAP approach  
for the Wider Caribbean Region



The Critical Importance of  
UNDP/GEF-supported TDA-SAP approach  
for the Wider Caribbean Region



The Critical Importance of  
UNDP/GEF-supported TDA-SAP approach  
for the Wider Caribbean Region



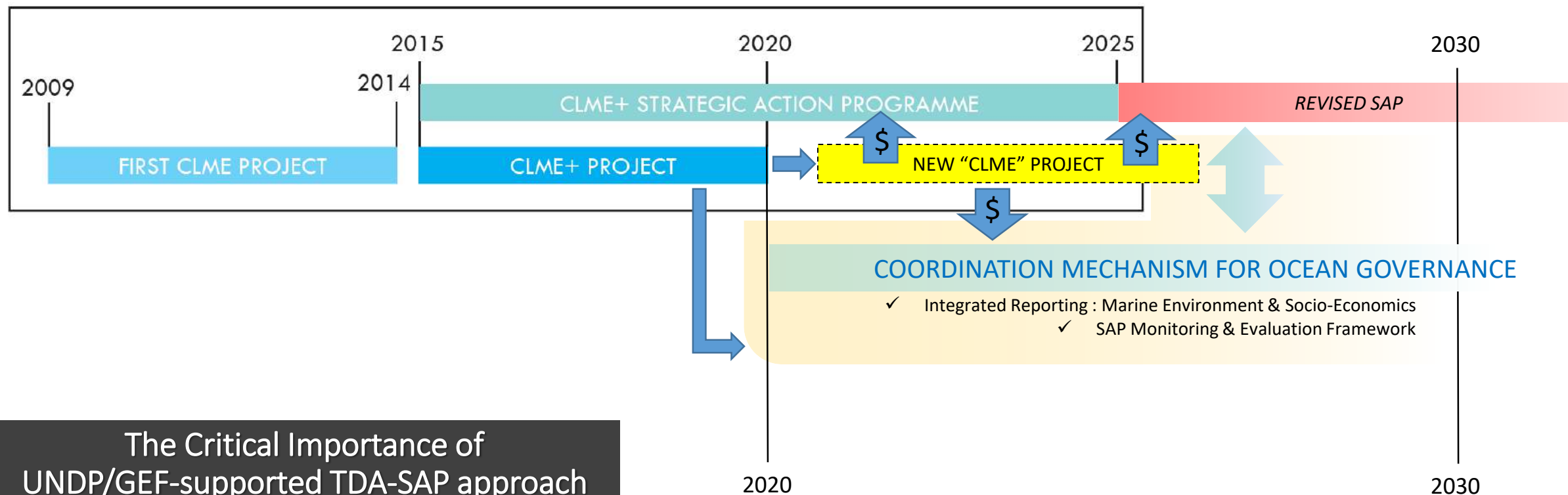
Empowered lives.  
Resilient nations.



www.theGEF.org







The Critical Importance of  
UNDP/GEF-supported TDA-SAP approach  
for the Wider Caribbean Region



Empowered lives.  
Resilient nations.



www.theGEF.org



- **INFORM**
- **CREATE AWARENESS**
- **TRIGGER ACTION**
- **MEASURE PROGRESS**



**BASELINE – TARGETS – CURRENT STATUS**  
(trends / levels of confidence / data gaps)